

vespermarine

Owner Guide

What the US Coast Guard AIS rule changes mean to your vessel

The rule changes are confirmed

The USCG has widened the number of vessels required to operate an AIS (Automatic Identification System).

An estimated 3200 new vessels will be able to install Class B AIS transponders. The majority of these are fishing vessels.

Must be installed on affected vessels by March 1, 2016.



Avoid being stuck in port

Under the new rules the Captain of the Port can determine that a voluntary installation of AIS mitigates their safety concern for that vessel in the event of bad weather, visibility, sea conditions, heavy port congestion, etc. So even vessels that aren't required to install AIS should consider it to prevent any days of lost operation.



Why install Class B?

The rule allows Class B devices because they can be less than 25% of the price of a Class A and installation is easier, saving owners thousands of dollars. The two classes are interoperable with only a few differences. Class A has higher power output and more frequent position reports which applies to fast moving vessels.



TIMING: The new rules took effect March 2, 2015 and all affected vessels must install a USCG Type Approved AIS transponder within 1 year. For the complete details on the new rule visit the www.navgen.uscg.gov or www.regulations.gov websites.

Approximately 55% of the newly required vessels may install Class B AIS transponders which provide an affordable and easier to install AIS solution. This includes all fishing vessels, but other vessels such as dredges, vessels certified for less than 150 passengers and not operating in a VTS or in excess of 14 knots may also use a Class B AIS.

AFFECTED VESSELS: All commercial vessels of 65 feet or greater; towing vessels of 26 feet and more than 600 hp; vessels certified to carry more than 150 passengers; dredges operating near a commercial channel; vessels engaged in moving certain dangerous cargo.

Type of Vessel	AIS Class Required
Commercial fishing vessels of 65 feet or greater	Class B
Commercial self-propelled vessels \geq 65 feet and certified to carry $<$ 150 passengers	Class B *
Dredges operating outside shipping fairways	Class B
Towing vessels of 26 feet or greater and greater than 600 hp	Class A
Vessels moving certain dangerous cargo or flammable / combustible liquid in bulk	Class A
Other commercial self-propelled vessels of 65 feet or greater not described above	Class A

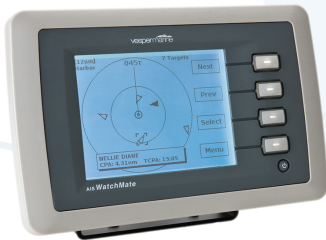
* Class A required if subject to pilotage by other than the vessel Master or crew, operating within a VTS, or in excess of 14 knots.



Easy options for compliance

A product for every customer need

WatchMate 850 AIS transponder and display



Standalone all-in-one robust and reliable AIS solution with the easiest to use dedicated display. Unique Anchor Watch and direct DSC calling features.

XB-8000 AIS transponder with built-in WiFi and NMEA 2000 Gateway



Use a WiFi tablet as your AIS, navigation and instrument display. Seamlessly integrate with MFD's and on-board NMEA networks.

WatchMate Vision AIS transponder with built-in WiFi and touchscreen



Ultimate all-in-one solution, with intuitive touchscreen display and use a WiFi tablet as your AIS, navigation and instrument display.

Choosing the best option for complying with new USCG AIS rules

New AIS rule requirements	Options for compliance	850	XB-8000	Vision
Ability to access AIS information from the conning position. AIS is primarily intended for use of the person controlling the vessel, who must maintain a periodic AIS watch.	Use the integrated screen	✓		✓
	Integrate to an existing MFD	✓	✓	✓
	Connect a smartphone or tablet via WiFi to use a wide variety of Vesper Marine and 3rd party navigation apps		✓	✓
Accurate input and upkeep of all AIS data including system updates	Directly via the integrated screen	✓		✓
	Use smartphone or tablet apps via WiFi		✓	✓
Accurate broadcast of an official MMSI	Approved by USCG for correct transmission of vessel details including MMSI	✓	✓	✓
	Wirelessly verify and monitor transmissions on tablets and smartphones		✓	✓
Continual operation of AIS & its associated devices when underway, at anchor, or moored in or near a channel or fairway	Fully self-contained AIS with display. No other equipment required	✓		✓
	Interface to any AIS-capable MFD	✓	✓	✓
	Operate via tablet and smartphone over WiFi		✓	✓



Vesper Marine - your perfect AIS partner

Innovative Marine AIS Technology

Vesper Marine's reputation for highly differentiated, reliable and award winning AIS solutions has made them a global leader with distributors in 40 countries.

Their key to success is the excellence in design, development and manufacturing of their own range of unique AIS products.



Easy to use

Fully compatible with all AIS capable MFDs and plotters.

No MFD upgrade required if the MFD is not AIS capable. Use a dedicated self-contained display or a tablet via WiFi.

Use a tablet with a wide variety of Apps to view navigation and instrument data from your NMEA network.



Easy to install

Simple configuration – designed for fast and efficient install.

No PC needed – use our App via WiFi (Vision and XB-8000) or the on-screen interface (Vision and 850) to setup and configure.

Robust & safe – waterproof (IPx7) with fully isolated interfaces to protect your equipment from damage that other AIS transponders can sometimes cause.



Easy to support

Diagnostics via your phone – use your smartphone/tablet via WiFi for diagnostics and troubleshooting.

Antenna troubleshooting – built-in tools for identifying difficult to find antenna problems.

AIS expertise – nobody knows AIS like the Vesper Marine support team. Customers rave about our technical support and rank it the best in the world.



Easy to afford

Competitive pricing – packed full of features, but at an affordable price.

Cost effective installation and support – using Vesper Marine's patented technology.

Rugged construction – built to last with long service life designed-in right from the start. Exceeds the industry standards for exposed environmental protection.



Phone +64 9 950 4848 | Fax +64 9 950 4085
Email: info@vespermarine.com | Web www.vespermarine.com
Facebook www.facebook.com/vespermarine