



1200 E. 151st Street
 Olathe, KS 66062
 913-397-8200

SERVICE ADVISORY

NO.: 1506 Rev B

TO: Garmin Aviation Service Centers, Distributors, and End Users
DATE: January 29, 2018
SUBJECT: Spare Supplemental Data Cards
REVISION B: Removed 010-01431-00

PRODUCTS AFFECTED

All G5000, G5000H, G3000, G2000, G1000, G1000H, G950, G900X, G600, G500, G500H, and GTN 650/750 Series products are affected.

ISSUE

Due to variability in the specification and build quality of commercially available data cards, some data cards may not be compatible or approved for use with your Garmin system. To ensure availability of data cards that are both compatible and authorized under Garmin TSOs, Garmin now offers blank replacement cards for your avionics. These blank cards do not contain any pre-loaded aviation databases, and are intended for operators who have already purchased databases from the flyGarmin website. Databases for Garmin avionics can be purchased directly from www.flyGarmin.com. Blank replacement cards are available through authorized Garmin Aviation Dealers and Service Centers.

Table 1 shows the compatibility of each replacement card and serves as a reference to ensure the correct card is installed in the specified system.

The compatible Replacement SD Card part number 010-01431-01 is equivalent to the “Original Part Number(s)” listed in Table 2 through Table 5 when loaded with the specified data from flygarmin.com.

Table 1: Replacement Card Compatibility

Device	Original Part Number(s)	Replacement (Blank) Part Number
G5000, G5000H, G3000, G2000	010-00474-44	010-01431-01
G1000, G950, G900X	010-00330-41, -42, -43, -45	010-01431-01
G1000H	010-00330-4A, -4B, -4C, -4D, -4E, -4F, 4G	010-01431-01
G600	010-00769-70, -43, -A1	010-01431-01
G500	010-00769-70, -44, -A1	010-01431-01
G500H	010-00769-70, -4A, -4B, -4C, -4D, -4E, -4F, -AA, -AB, -AC, -AD, -AE, -AF	010-01431-01
GTN 750, GTN 750H, GTN 725, GTN 650, GTN 650H, GTN 635, GTN 635H, GTN 625	010-00900-00, -10, -20, -30, 010-01157-00, -41, -42, -43, -44, -45, -46	010-01431-01

© 2018 Garmin Ltd. or its subsidiaries.
 This work is licensed under a
 Creative Commons Attribution-NonCommercial-NoDerivs 3.0 Unported License.

Replacement card part number 010-01431-01 is an 8 GB SD card. **G1000, G950, and G900X must have software version 8.20 or later in order to support the specified replacement card. G600/G500 must have GDU 620 software version 3.00 or later in order to support the specified replacement card. G500H must have GDU 620 software version 4.00 or later in order to support the replacement card.** All other products are fully compatible with the specified replacement cards.

Tables 2-5 below outline the databases to be downloaded to the spare supplemental database card to make it equivalent to the factory provided data card.

Table 2: G5000, G5000H, G3000, G2000 Data Card Databases

Original Part Number	SafeTaxi	Terrain	BaseMap	Obstacle	FliteCharts	Airport Directory
010-00474-44	United States	Worldwide (4.9 Arc Second)	Worldwide	US/Europe	United States	United States, AOPA

Table 3: G1000, G1000H Data Card Databases

Original Part Number	SafeTaxi	Terrain	BaseMap	Obstacle	FliteCharts	Airport Directory
010-00330-41	N/A	Worldwide (30 Arc Second)	N/A	US/Europe	N/A	United States, AOPA
010-00330-42	United States	Worldwide (30 Arc Second)	Worldwide	US/Europe	United States	United States, AOPA
010-00330-43	United States	Worldwide (9 Arc Second)	Worldwide	US/Europe	United States	United States, AOPA
010-00330-45	United States	Worldwide (4.9 Arc Second)	Worldwide	US/Europe	United States	United States, AOPA
010-00330-4A	United States	Americas-North (6 Arc Second)	Worldwide	US/Europe (Heli)	United States	United States, AOPA
010-00330-4B	United States	Americas-South (6 Arc Second)	Worldwide	US/Europe (Heli)	United States	United States, AOPA
010-00330-4C	United States	Atlantic-North (6 Arc Second)	Worldwide	US/Europe (Heli)	United States	United States, AOPA
010-00330-4D	United States	Atlantic-South (6 Arc Second)	Worldwide	US/Europe (Heli)	United States	United States, AOPA
010-00330-4E	United States	Pacific-North (6 Arc Second)	Worldwide	US/Europe (Heli)	United States	United States, AOPA
010-00330-4F	United States	Pacific-South (6 Arc Second)	Worldwide	US/Europe (Heli)	United States	United States, AOPA

Table 4: G600, G500, G500H Data Card Databases

Original Part Number	SafeTaxi	Terrain	BaseMap	Obstacle	FliteCharts	Airport Directory
010-00769-70	N/A	N/A	N/A	N/A	N/A	N/A
010-00769-43	United States	Worldwide (9 Arc Second)	N/A	US/Europe	United States	N/A
010-00769-44	United States	Worldwide (9 Arc Second)	N/A	US/Europe	United States	N/A
010-00769-4A	United States	Americas-North (6 Arc Second)	N/A	US/Europe (Heli)	United States	N/A
010-00769-4B	United States	Americas-South (6 Arc Second)	N/A	US/Europe (Heli)	United States	N/A
010-00769-4C	United States	Atlantic-North (6 Arc Second)	N/A	US/Europe (Heli)	United States	N/A
010-00769-4D	United States	Atlantic-South (6 Arc Second)	N/A	US/Europe (Heli)	United States	N/A
010-00769-4E	United States	Pacific-North (6 Arc Second)	N/A	US/Europe (Heli)	United States	N/A
010-00769-4F	United States	Pacific-South (6 Arc Second)	N/A	US/Europe (Heli)	United States	N/A
010-00769-A1	Full Coverage	Worldwide (4.9 Arc Second)	Worldwide	US/Europe	United States	United States, AOPA
010-00769-AA	Full Coverage	Americas-North (2.5 Arc Second)	Worldwide	US/Europe (Heli)	United States	United States, AOPA
010-00769-AB	Full Coverage	Americas-South (2.5 Arc Second)	Worldwide	US/Europe (Heli)	United States	United States, AOPA
010-00769-AC	Full Coverage	Atlantic-North (2.5 Arc Second)	Worldwide	US/Europe (Heli)	United States	United States, AOPA
010-00769-AD	Full Coverage	Atlantic-South (2.5 Arc Second)	Worldwide	US/Europe (Heli)	United States	United States, AOPA
010-00769-AE	Full Coverage	Pacific-North (2.5 Arc Second)	Worldwide	US/Europe (Heli)	United States	United States, AOPA
010-00769-AF	Full Coverage	Pacific-South (2.5 Arc Second)	Worldwide	US/Europe (Heli)	United States	United States, AOPA

Note 1: 010-00769-70 is used for transferring Navigation databases into the GDU 620.

Note 2: The 4.9 Arc Second and 2.5 Arc Second Terrain databases are only compatible with GDU 620 Software Version 7.00 and later.

Note 3: Flygarmin.com will request the GDU 620 Main Software Version to ensure the appropriate Obstacle database is downloaded.

Table 5: GTN 750, GTN 750H, GTN 725, GTN 650, GTN 650H, GTN 635, GTN 635H, GTN 625 Data Card Databases

Original Part Number	Navigation	SafeTaxi	Terrain	BaseMap	Obstacle	FliteCharts
010-00900-00	N/A	Full Coverage	Worldwide (9 Arc Second)	Worldwide	US/Europe	United States
010-00900-10	Americas	Full Coverage	Worldwide (9 Arc Second)	Worldwide	US/Europe	United States
010-00900-20	International	Full Coverage	Worldwide (9 Arc Second)	Worldwide	US/Europe	United States
010-00900-30	Worldwide	Full Coverage	Worldwide (9 Arc Second)	Worldwide	US/Europe	United States
010-01157-00	N/A	Full Coverage	Americas-North (2.5 Arc Second)	Worldwide	US/Europe (Heli)	United States
010-01157-41	Americas (Heli)	Full Coverage	Americas-North (2.5 Arc Second)	Worldwide	US/Europe (Heli)	United States
010-01157-42	Americas (Heli)	Full Coverage	Americas-South (2.5 Arc Second)	Worldwide	US/Europe (Heli)	United States
010-01157-43	International	Full Coverage	Atlantic-North (2.5 Arc Second)	Worldwide	US/Europe (Heli)	United States
010-01157-44	International	Full Coverage	Atlantic-South (2.5 Arc Second)	Worldwide	US/Europe (Heli)	United States
010-01157-45	International	Full Coverage	Pacific-North (2.5 Arc Second)	Worldwide	US/Europe (Heli)	United States
010-01157-46	International	Full Coverage	Pacific-South (2.5 Arc Second)	Worldwide	US/Europe (Heli)	United States

Note 1: The 2.5 Arc Second Terrain databases are only compatible with GTN Main Software Version 4.00 and later.

Note 2: Each database card is shipped from the factory loaded with two different versions of the obstacle database to support all GTN Main Software Versions. Flygarmin.com will request the GTN Main Software Version to ensure the appropriate Obstacle database is downloaded.

Table 6: Additional and alternate database options available

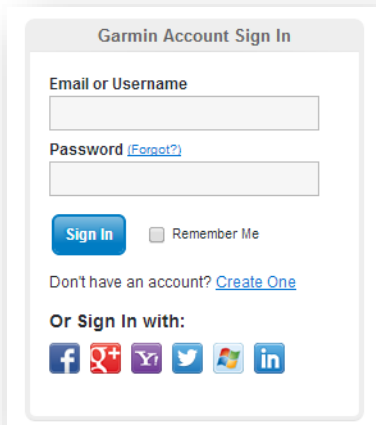
Database Name	Database Loaded on Original Part Number	Additional/Alternate Database
Airport Directory	United States AOPA	AC-U-KWIK Americas, Atlantic, Pacific, or Worldwide
FliteCharts	United States	Eastern US, Western US, Central US, Canada, or Europe
Jeppesen ChartView (See Note 1)	Not originally loaded	Jeppesen ChartView approach plates (various coverage options available)
SafeTaxi	United States or Full Coverage	North America, Canada, Europe, United States, Full Coverage
Obstacle	US/Europe (Heli)	US/Europe (Heli with Power Lines)

Note 1: Separate enablement required for ChartView functionality.

Instructions for Updating Databases on a Spare Supplemental Data Card from flyGarmin.com

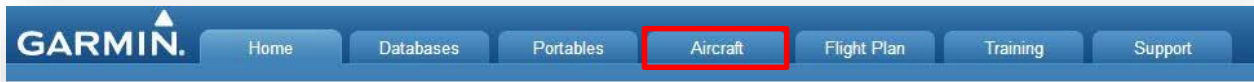
Please note the databases that need to be downloaded to the spare supplemental data card from the tables on the previous pages.

1. Navigate to www.flyGarmin.com, and log in with your username and password. If an account has not been created, click on the Create One link.



The image shows the 'Garmin Account Sign In' form. It includes a text input field for 'Email or Username', another for 'Password' with a 'Forgot?' link, a 'Sign In' button, and a 'Remember Me' checkbox. Below the form is a link for 'Create One' and a section for 'Or Sign In with:' featuring social media icons for Facebook, Google+, YouTube, Twitter, LinkedIn, and a generic social icon.

2. Once logged in, click on the Aircraft tab at the top of the page. If you have not added an aircraft yet, click on the 'Add a New Aircraft' tab on the right side of the page.

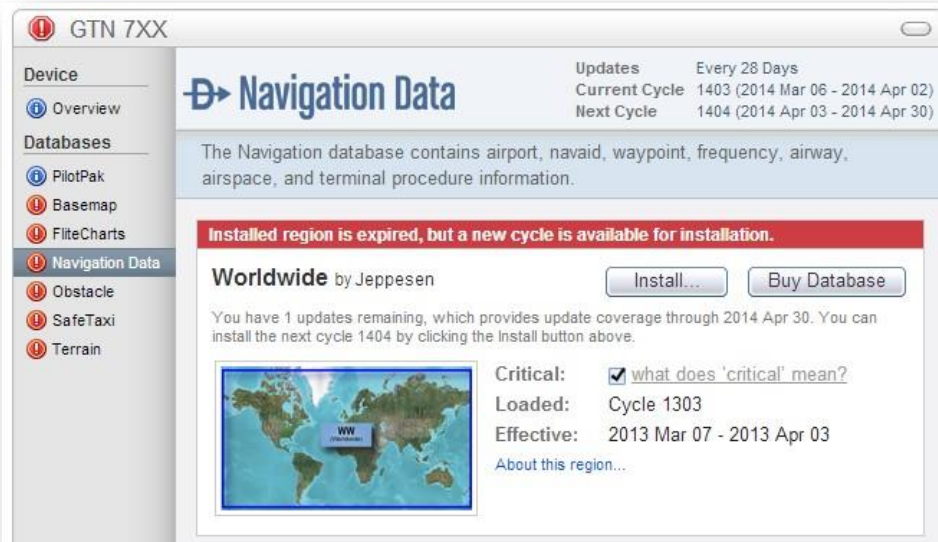


3. Below your aircraft information, you will see your avionics (G1000, GTN 7xx, etc.). If you have not added your avionics, click the link to 'Add a New Aircraft Device', and enter the System ID number.

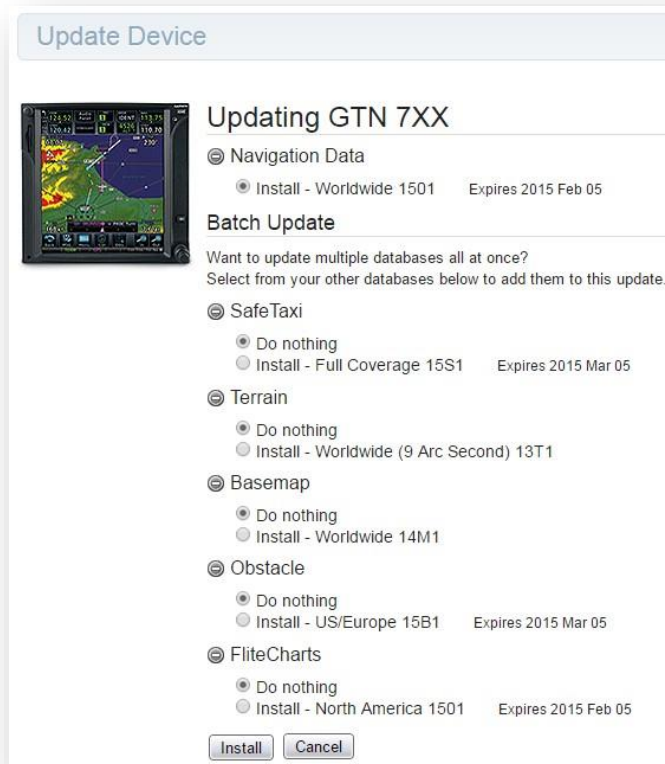


The image shows the 'Aircraft Profile' page for a 'GTN 7XX' device. At the top, there are statistics: 'Expired Databases: 17', 'About to Expire: 0', and 'Up to date: 0'. A link 'Add a new aircraft device' is also present. The main content area is titled 'GTN 7XX' and includes an 'Overview' tab. On the left, a sidebar lists databases: PilotPak, Basemap, FliteCharts, Navigation Data, Obstacle, SafeTaxi, and Terrain. The main area displays a small image of the GTN 7XX avionics screen and the following information: 'Model: Garmin GTN 7XX' and 'System ID: 343004DB68DB9'. There are 'Edit | Delete' links and a 'Redeem a Coupon' link for 'Additional software for your GTN 7XX'.

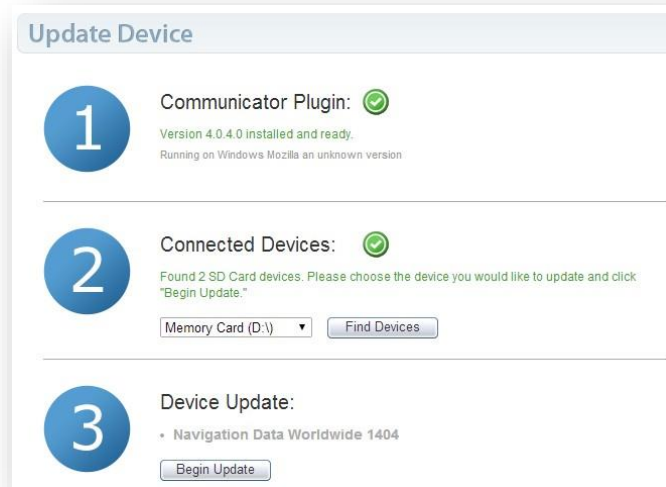
- Click on a database, listed in the column to the left of the avionics information. This gives you the option to purchase a database, and, if a database has already been purchased, to install the database. Click Install.



- The next page allows you to simultaneously install any additional databases you may own. Depending on your device, select the appropriate databases and cycles, and select Install again.



- The last step is the 1, 2, 3 page. Once the Communicator Plugin is detected (if not downloaded to your computer, you will be given a chance to download this), connect your SD card to your computer. Step 2 will find the SD card, and once it does, click Begin Update on Step 3. Agree to the terms and the download will commence.



Once the approved replacement data card has been programmed using the steps above, it can be used in your Garmin avionics the same as the factory supplied SD card.